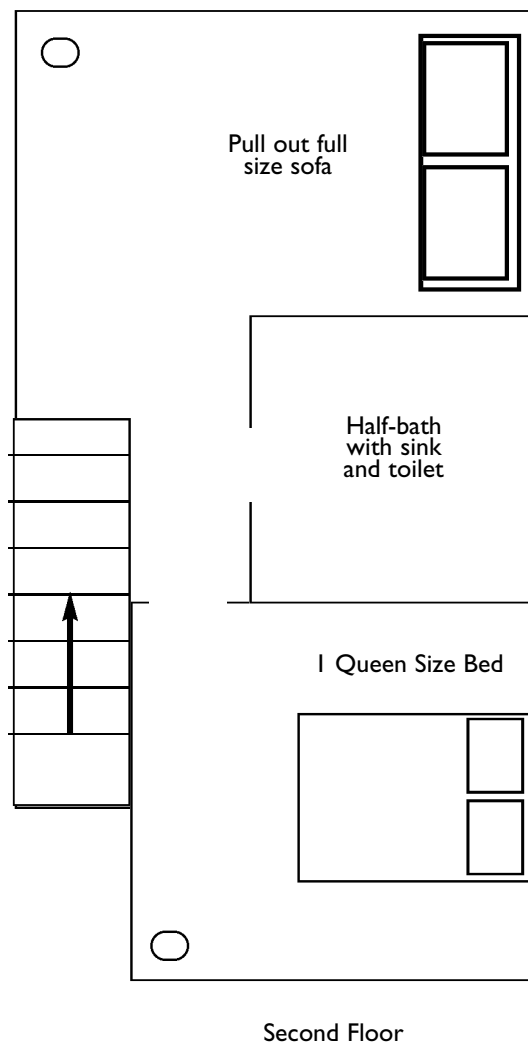
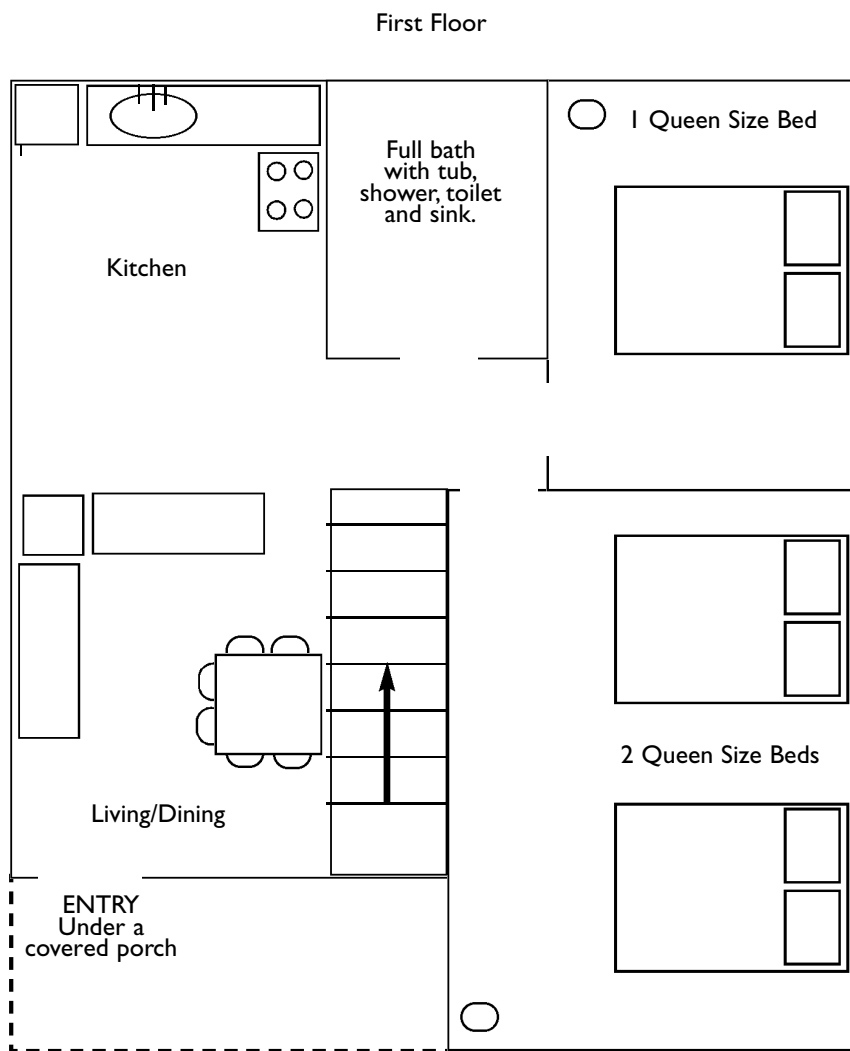


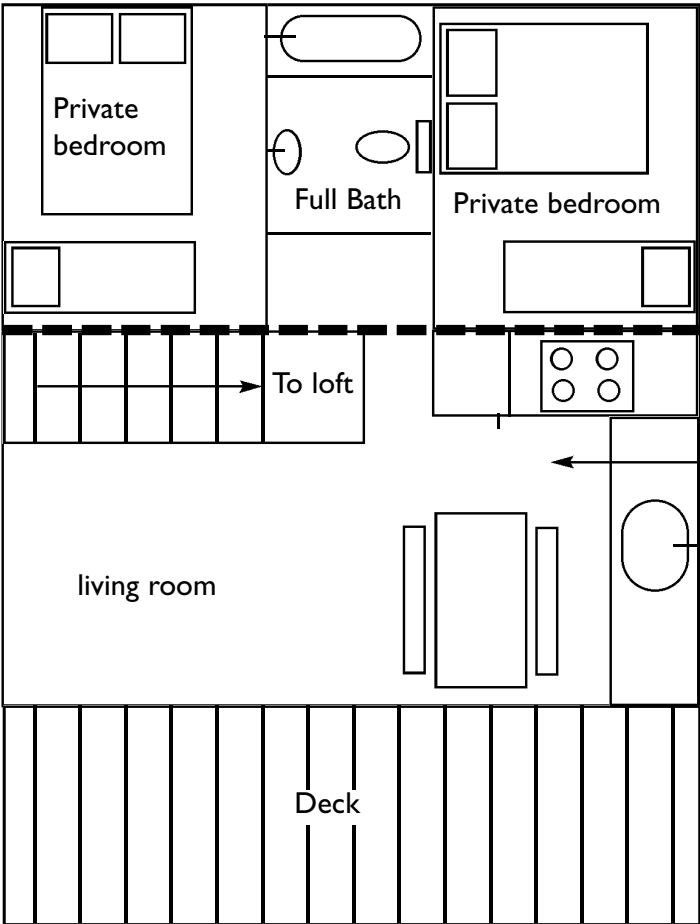
SILVER COVE GUEST HOUSES (3)

The Silver Cove Guest House has 3 private bedrooms with 4 Queen size beds and a den with a full size pull out sofa. It has 1 and a half bathrooms, complete kitchen with full size fridge and stove/oven, living and dining areas, covered porch, leather furniture. This cabin sleeps 10 people max. These three cabins overlook Silver Cove on Wyman Lake in Caratunk



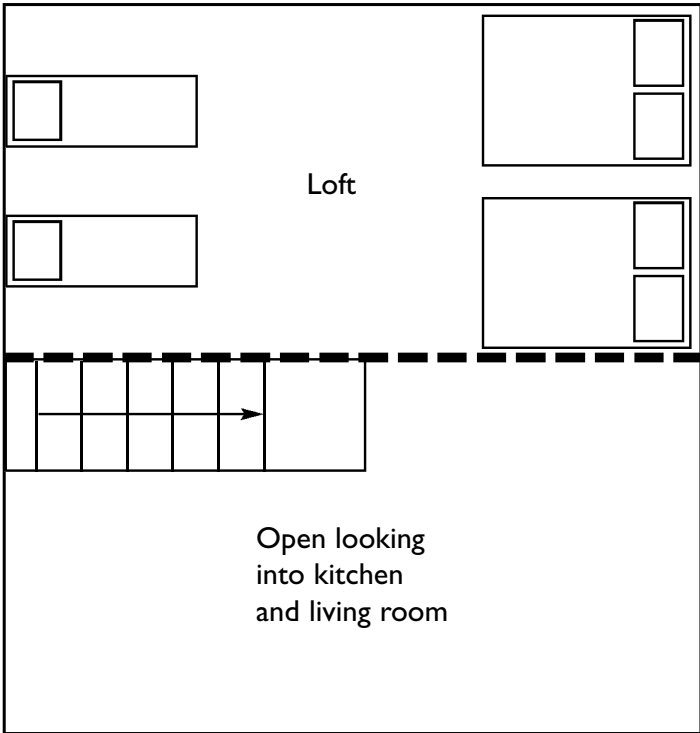
STERLING LAKESIDE GUESTHOUSES (6)

FIRST FLOOR

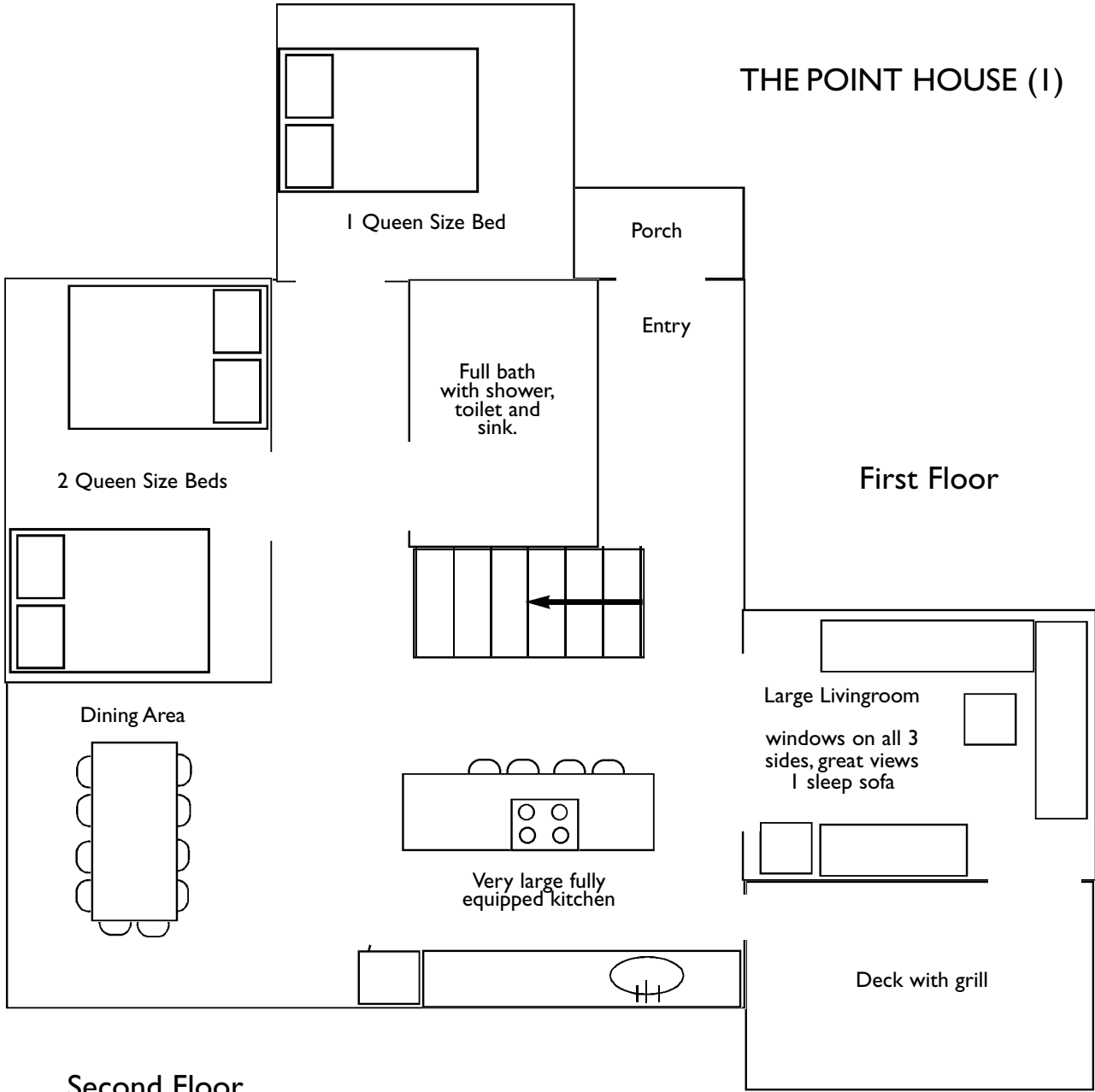


Kitchen, with microwave, coffee maker, fridge, cook top, and sink. These guesthouses have a toaster oven but not a full size oven (except Black Bear cabin has a full size oven). All have a 4 burner cook-top stove.

SECOND FLOOR



THE POINT HOUSE (1)



Second Floor

The second floor is the same footprint as the first floor without the sunken livingroom.

It has 3 private bedrooms with 3 queen size beds and 2 full size bathrooms. One of the three upstairs bedrooms is a very large master bedroom and bathroom suite with a King size bed and loveseat.

The Point House is our premier luxury rental home. It has a very large sunken livingroom, large kitchen and diningroom, 6 bedrooms with 6 queen size beds, 1 King size bed and 3 full bathrooms. Outside the kitchen is a large deck with a gas grill. This cabin sleeps 14 people max. This home is next door to the Silver Cove Guest Houses and overlooks Silver Cove and Wyman Lake in Caratunk